

# Envista

## WEB Edition

### Internet WEB Site System Prepared for National & Regional AQM Networks 3rd Generation

Envista WEB is designed to allow you to publish your environmental data which has been captured using Envista ARM environmental data management software onto the World Wide Web.

Designed especially with the needs of public bodies and other agencies with a responsibility for environmental monitoring and reporting, Envista WEB provides a simple route to publication either to concerned citizens or within your organization through an Intranet.

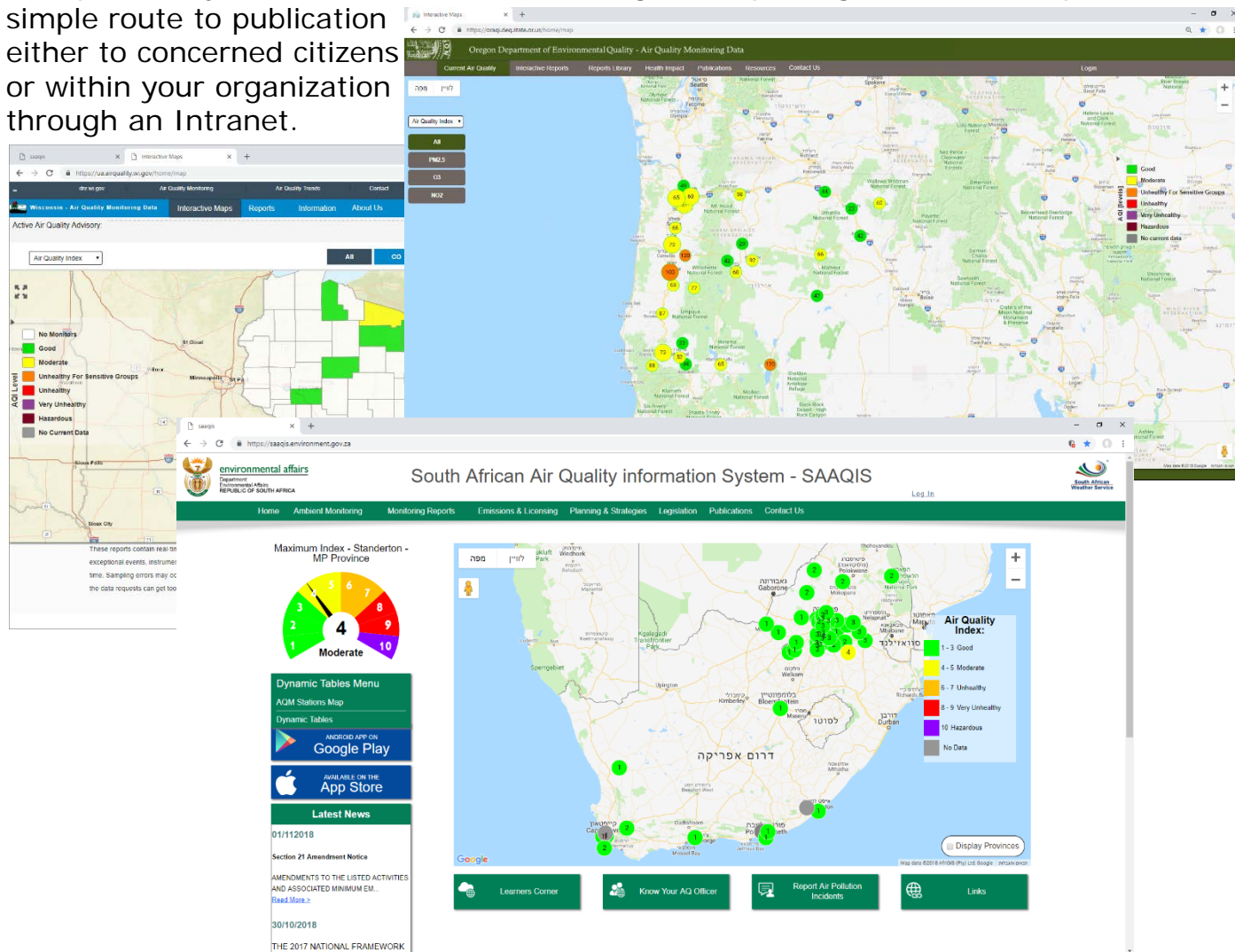


Figure 1 - Envista WEB Edition Overview

Visitors to the web site are presented with the welcome screen, tailored to your choice of language. Header contains the site and organization title. The menu frame on top plus Air quality Advisory and navigation board. The News and Links frames on the right hand side can be configured by the site administrator. Other frames can be displayed like Network map and AQM Station Dash boards.

# Software Main Specifications & Features

- ❖ Microsoft ASP. Net, MVC and HTML 5, application for Windows Server 2016.
- ❖ Windows 2016/19, Linux and Solaris database servers.
- ❖ SQL Server 2016/17/19 or Oracle9i/10g/11g DB.
- ❖ Multithreaded communication with data loggers and instruments via TCP/IP or HTTP (API and SOAP).
- ❖ Off the shelf Internet/Intranet web site.
- ❖ Multi-lingual design.
- ❖ Completely menu-driven and touch-driven.
- ❖ Designed for Regional and National/State AQM Network.
- ❖ Dynamic Tabular displays.
- ❖ GIS Navigation map (Google and ESRI API).
- ❖ Station Dash Board (On Line Gauges).
- ❖ Data analysis and reporting.
- ❖ Download reports in Excel and PDF formats.
- ❖ General information screens.
- ❖ Download area of monthly and annual reports.
- ❖ Links to Environmental Monitoring and Information sites.
- ❖ Complete web based administration tools.
- ❖ Full API Support Android and iOS Apps.
- ❖ Smart Phone Web Interface Version.
- ❖ Android and iOS Application Solutions.

If the mouse is clicked above a 'Index-spot', a AQI chart screen will be displayed with AQI levels for today. By clicking on Go to Station Info, the display will then switch to an site board for the selected station.

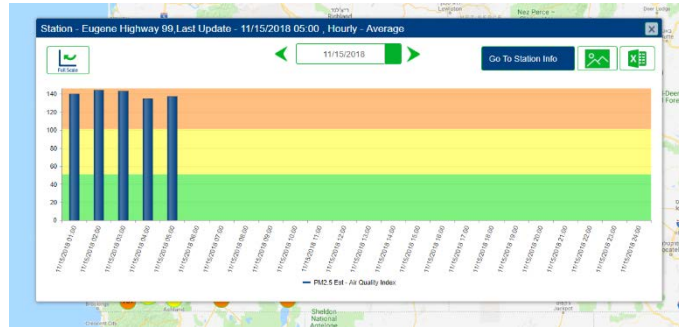


Figure 3- Parameter AQI Chart

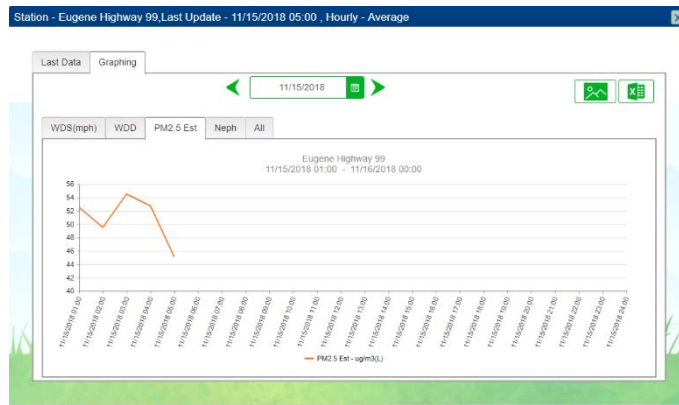


Figure 4- Site Info and Charts Board Dynamic Displays  
The following *Dynamic* displays are available:

- ❖ Tabular: Display current data for one or more stations in tabular format. Direct Station Board access by pressing the station name.
  - ❖ Station Board: Current received data and
  - ❖ Index Gauge display.
  - ❖ Navigation GIS Map: GIS interface for Navigation purpose, current AQI status and Parameters values.
- The User can move the map zoom in and out and change map resolution.

## GIS Navigation Map

ESRI map can be displayed of the entire area covered by the environmental monitoring stations, Point, Polygon and Line SHP file supported. The Station location layer is a Point SHP vector map. The Software support also Google Map as Map Back ground.

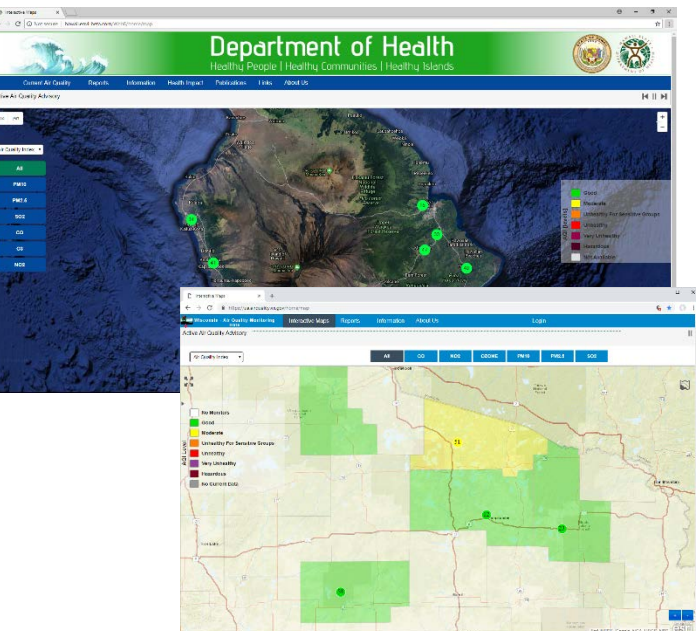


Figure 2 - Virtual Earth GIS Navigation Map

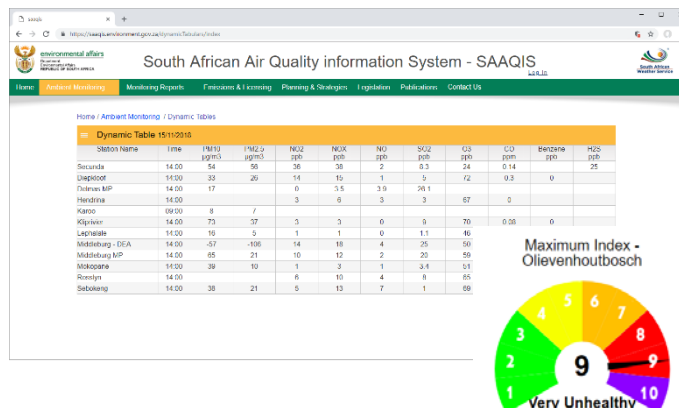


Figure 5 - Dynamic Tabular & AQI Gauge Display

# Reports and Analysis

By using this feature, the user can produce text and graphical reports.

- ❖ Station Data Report –Standard tabular and graphical reports for Station values. Day, week, month and user defined (periodic) report intervals are supported. Stored data values may be averaged before being reported. Values reported may be filtered.
- ❖ Monthly Matrix - Monthly Summary by Hour and by Day
- ❖ nY Time Plot – n numbers of parameters plotted against time.
- ❖ XY Time Plot – Correlation between two parameters.
- ❖ Wind & Pollution Rose - Joined pollution concentration, wind direction and Speed relative frequency.
- ❖ Group - Report that reflects a group of monitors related to one or more stations as set up by the user.
- ❖ Histogram - The frequency of occurrence for various ranges of a monitor's value.
- ❖ Index - Performance of the Air Quality Index value for a station or several stations.

# The user can select the following analysis features:

- ❖ Analysis period of day, week, month, or year.
- ❖ Average Type Mean, Running, Running Forward, Maximum and Minimum.
- ❖ Data average interval of 1min, 5min, 6min, 10min, 15min, 30min, 1hr, 3hr, 6hr, 8hr, 12hr, or 24hr.
- ❖ Output to display, printer, or file (XLS, PDF, JPG and PNG format).

Figure 6 – Stations Monitor Report Dialog

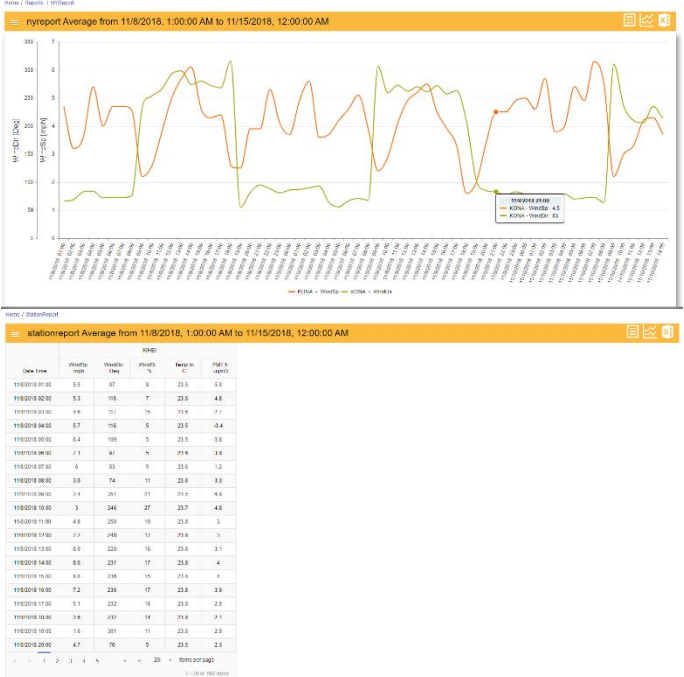


Figure 7 – Station Textual and Chart Displays

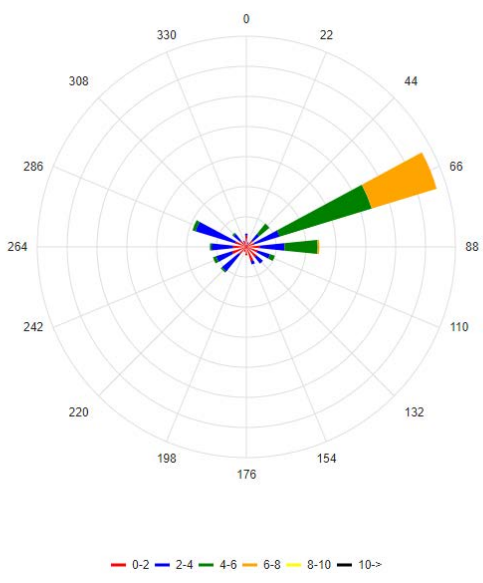


Figure 8 – Wind Rose display

# Files Management

The user can build files management menus by using the Administration tools. Navigation between files type can be done from the main menu or from sub menu.

Title	Efile Date	Efile Author
X	X	X
City of Tahlequah ambient air quality monitoring report - Mar 2012.pdf	18/09/2017	
City of Tahlequah ambient air quality monitoring report - Nov 2014.pdf	18/09/2017	
City of Tahlequah ambient air quality monitoring report - November 2014.pdf	15/06/2017	
City of Tahlequah ambient air quality monitoring report - November 2014.pdf	18/09/2017	
City of Tahlequah ambient air quality monitoring report - June 2012.pdf	18/09/2017	
City of Tahlequah ambient air quality monitoring report - Mar 2013.pdf	18/09/2017	
KCN_DATA ambient AIR QUALITY MONITORING NETWORK Annual Report - 2012.pdf	18/09/2017	
KCN_DATA_Network Air Quality Monitors	18/09/2017	

Title	Efile Date	Efile Author
X	X	X
HMAQIN 2007 Annual Report	03/11/2006	Kant and Medway
HMAQIN 2008 Annual Report	21/12/2007	Kant and Medway
Kant & Medway Air Quality Monitoring Network Annual Report 2014	20/07/2015	Kant and Medway
Kant & Medway Air Quality Monitoring Network Annual Report 2015	27/07/2016	Kant and Medway
Kant & Medway Air Quality Monitoring Network Annual Report - 2002	01/05/2003	Kant and Medway
Kant & Medway Air Quality Monitoring Network Annual Report - 2003	01/05/2004	Kant and Medway
Kant & Medway Air Quality Monitoring Network Annual Report - 2004	01/07/2005	Kant and Medway
Kant & Medway Air Quality Monitoring Network Annual Report - 1998	01/04/1999	Kant and Medway
Kant & Medway Air Quality Monitoring Network Annual Report - 2009	01/07/2006	Kant and Medway
Kant & Medway Air Quality Monitoring Network Annual Report - 1997	05/10/2016	Kant and Medway

Figure 9 – Example of Files Management Displays

# WEB Management Tools

Using some of the most advanced technologies available, the WEB Site is highly configurable and can be extended to integrate your existing AQM web sites and information from multiple systems into a single all-encompassing environmental monitoring system.

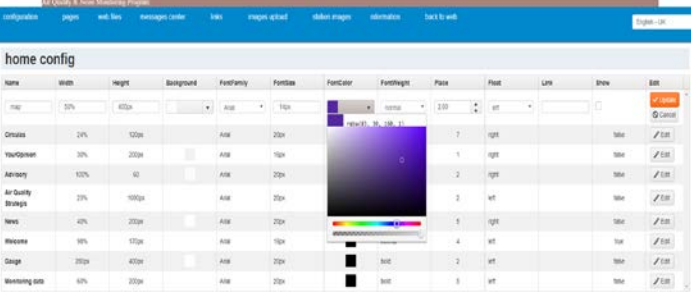


Figure 10– WEB Admin Home Page Edit

By using the Web Administration Tools the Administrator can setup the complete Web Site. The Following settings are available:

- ❖ Dynamic Tabular structure
- ❖ Pollutants Group settings.
- ❖ Reports available for Public.
- ❖ GIS Map settings and defaults.
- ❖ Look & Feel – Colors, Fonts and background.
- ❖ Languages Setup for the site.
- ❖ News Messages add and delete..
- ❖ Web Site Links.
- ❖ Information Screens.
- ❖ Insert files to the Publications area.
- ❖ Station Images.
- ❖ Dashboards layout Design and connection.

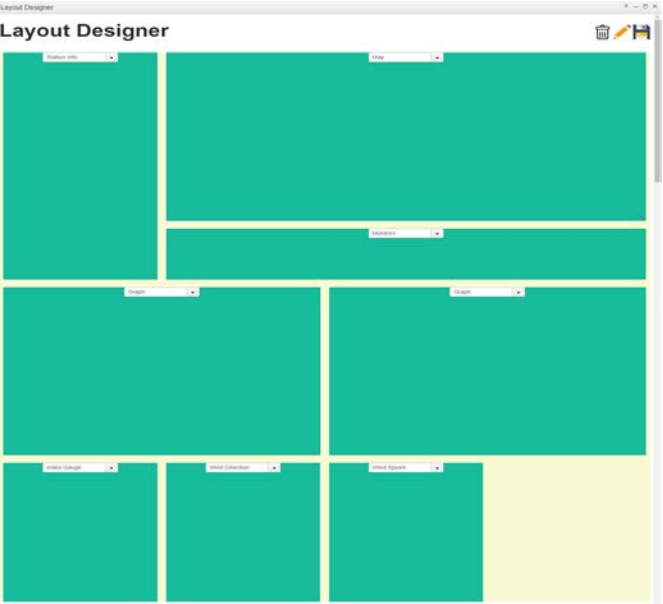


Figure 11– Dash Board Layout Designer



Figure 12– Dash Board Results after Design



Figure 13– Deferent Dash Board Layout

## Android and iOS Application Solutions



194 Clouse Lane Granville OH 43023  
 Tel. 740 281-5820 or 5824 Fax 740 522-6239  
 e-mail: sales@dr-das.com, www.dr-das.com



## ENVITECH Ltd.

1 Korazin St., Givataym 5358301 Israel  
 Tel.+972-3-5731944, FAX+972-3-7310221  
 e-mail: sales@envitechsoftware.com  
 www.envitechsoftware.com